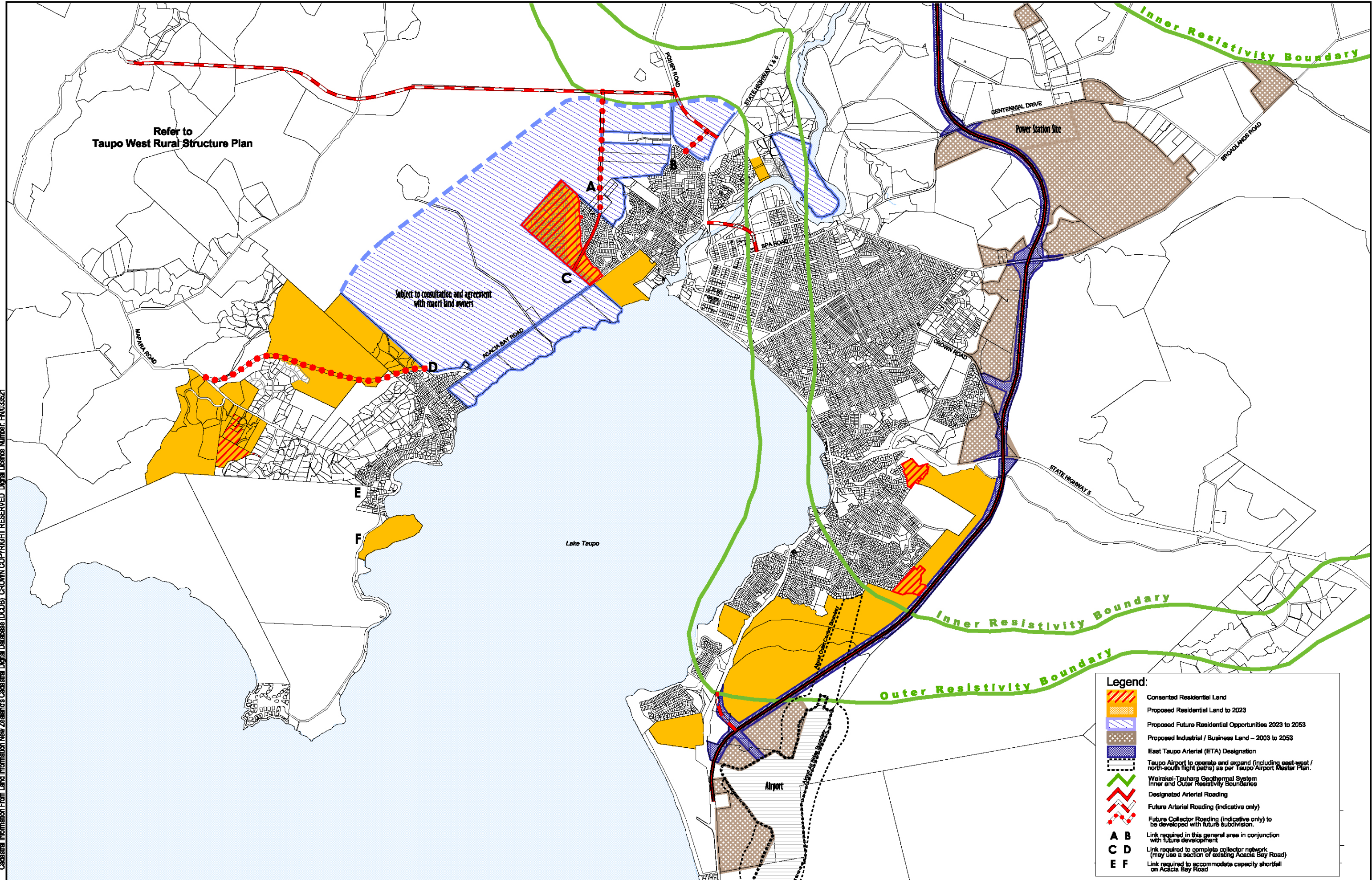


Cadastral Information From Land Information New Zealand's Cadastral Digital Database (CDB) CROWN COPYRIGHT RESERVED Digital Licence Number: HN036621



**Legend:**

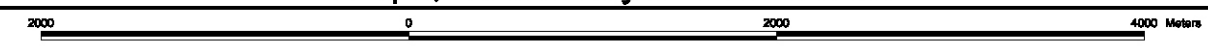
- Consented Residential Land
- Proposed Residential Land to 2023
- Proposed Future Residential Opportunities 2023 to 2053
- Proposed Industrial / Business Land - 2003 to 2053
- East Taupo Arterial (ETA) Designation
- Taupo Airport to operate and expand (including east-west / north-south flight paths) as per Taupo Airport Master Plan.
- Wairakei-Tauhara Geothermal System Inner and Outer Resistivity Boundaries
- Designated Arterial Roading
- Future Arterial Roading (indicative only)
- Future Collector Roading (indicative only) to be developed with future subdivision.
- A B** Link required in this general area in conjunction with future development
- C D** Link required to complete collector network (may use a section of existing Acacia Bay Road)
- E F** Link required to accommodate capacity shortfall on Acacia Bay Road

**Taupo District Council**

Copyright Reserved Taupo District Council  
Print Date: 23 April 2004

The information displayed in the GIS has been taken from Taupo District Council's databases and maps. It is made available in good faith, but its accuracy or completeness is not guaranteed.

## Future Urban Growth Concepts Taupo, Acacia Bay and Surrounds



Original Scale @ A3 1:40000

**MAP 1**  
Version 10  
Map subject to minor amendments

Map created by: GIS - Tracey May  
Map graphic location:  
v:\66\structure planning\TUSP\tpourban\_sp\map 1