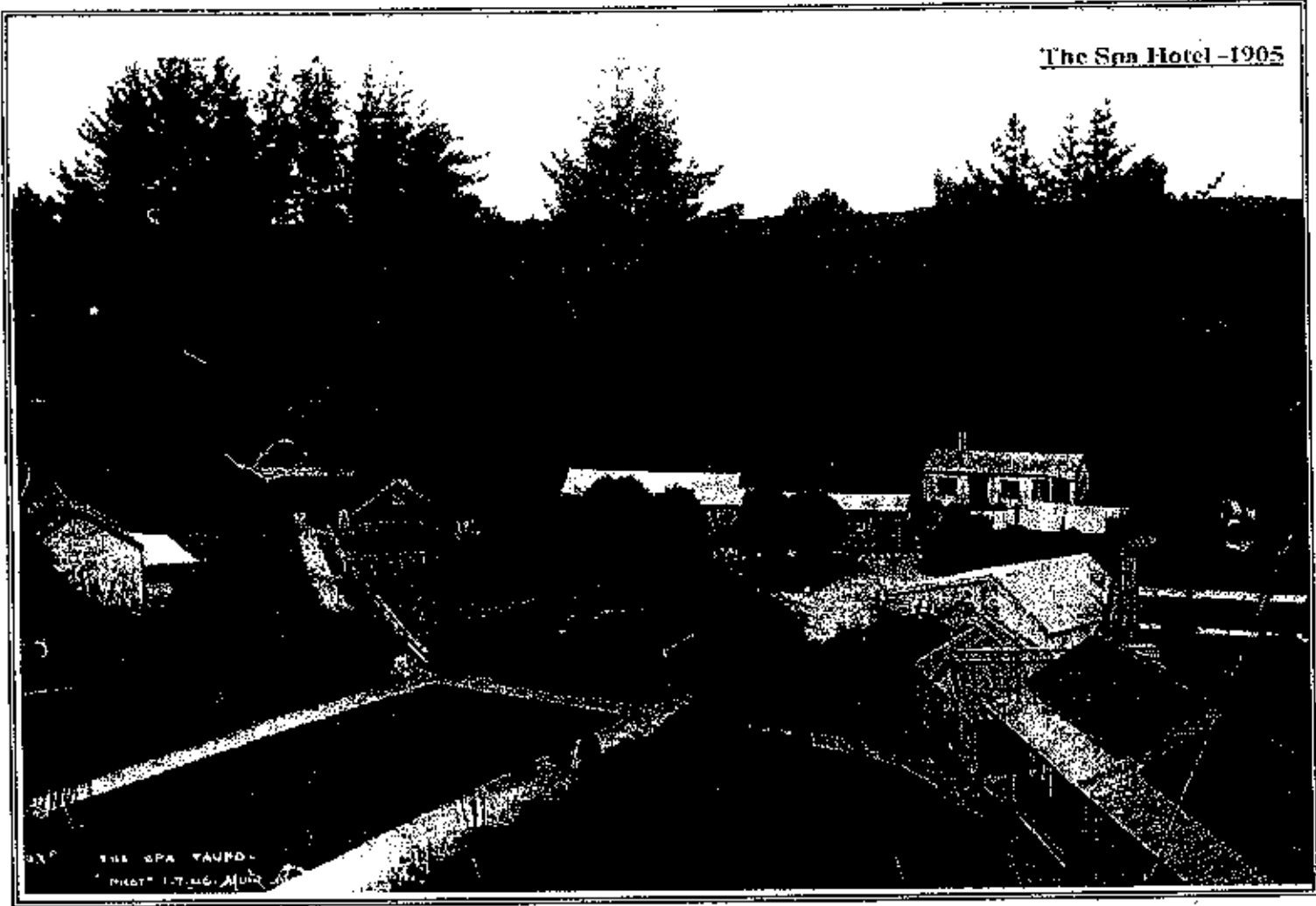




Part G: Plan Review

This Management Plan will be kept under continuous review as circumstances affecting the management of the reserve change. This is necessary to ensure its continued relevance to the management of the reserves. Minor adjustments can be made by publicly advertising changes during its currency, but major changes in policies and objectives would require a complex review. A complete plan review will generally be undertaken at 5 yearly intervals to ensure its continued relevance to management and public requirements.



Spa Thermal Park - Riverbank Recreational and Sewer Rooms

