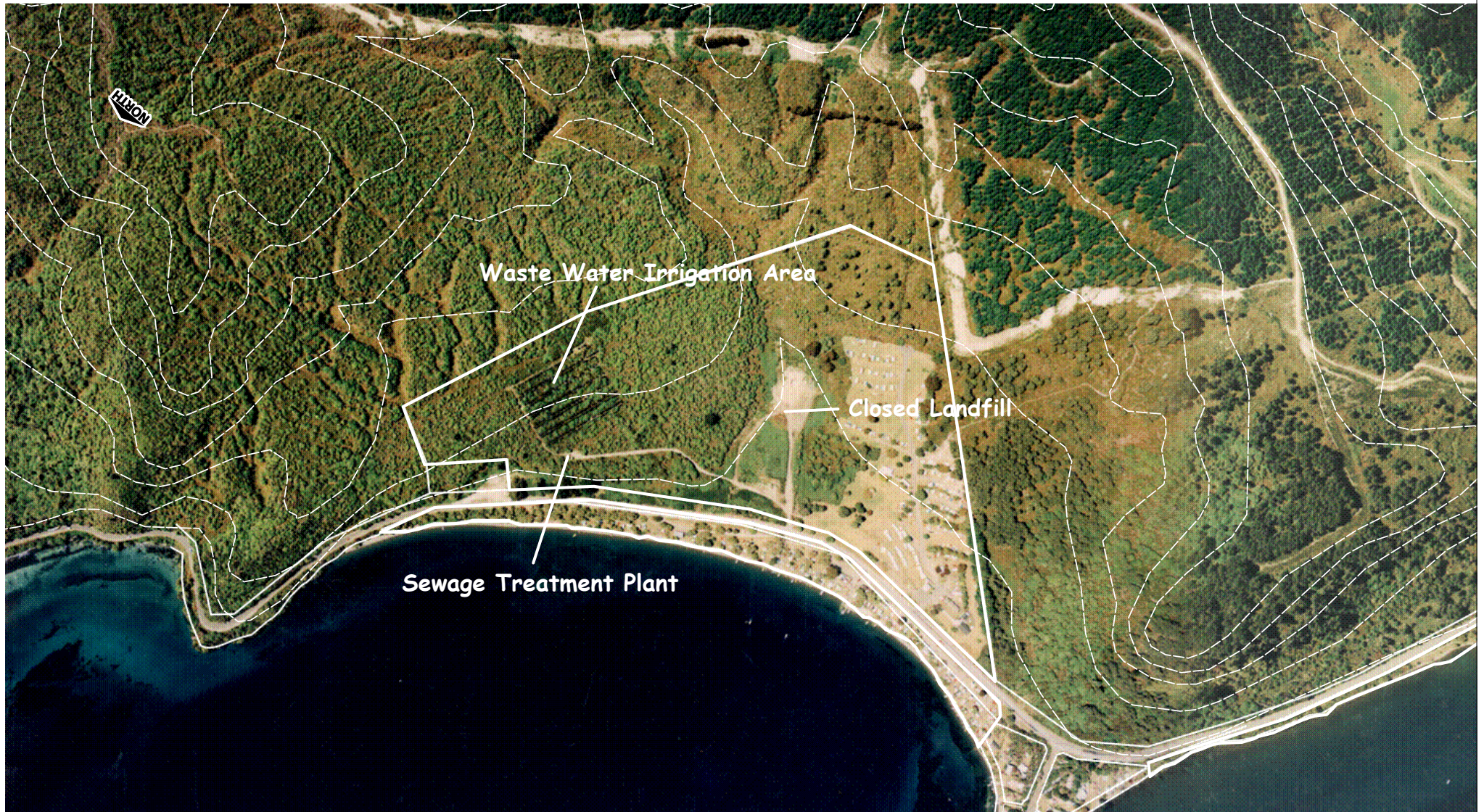


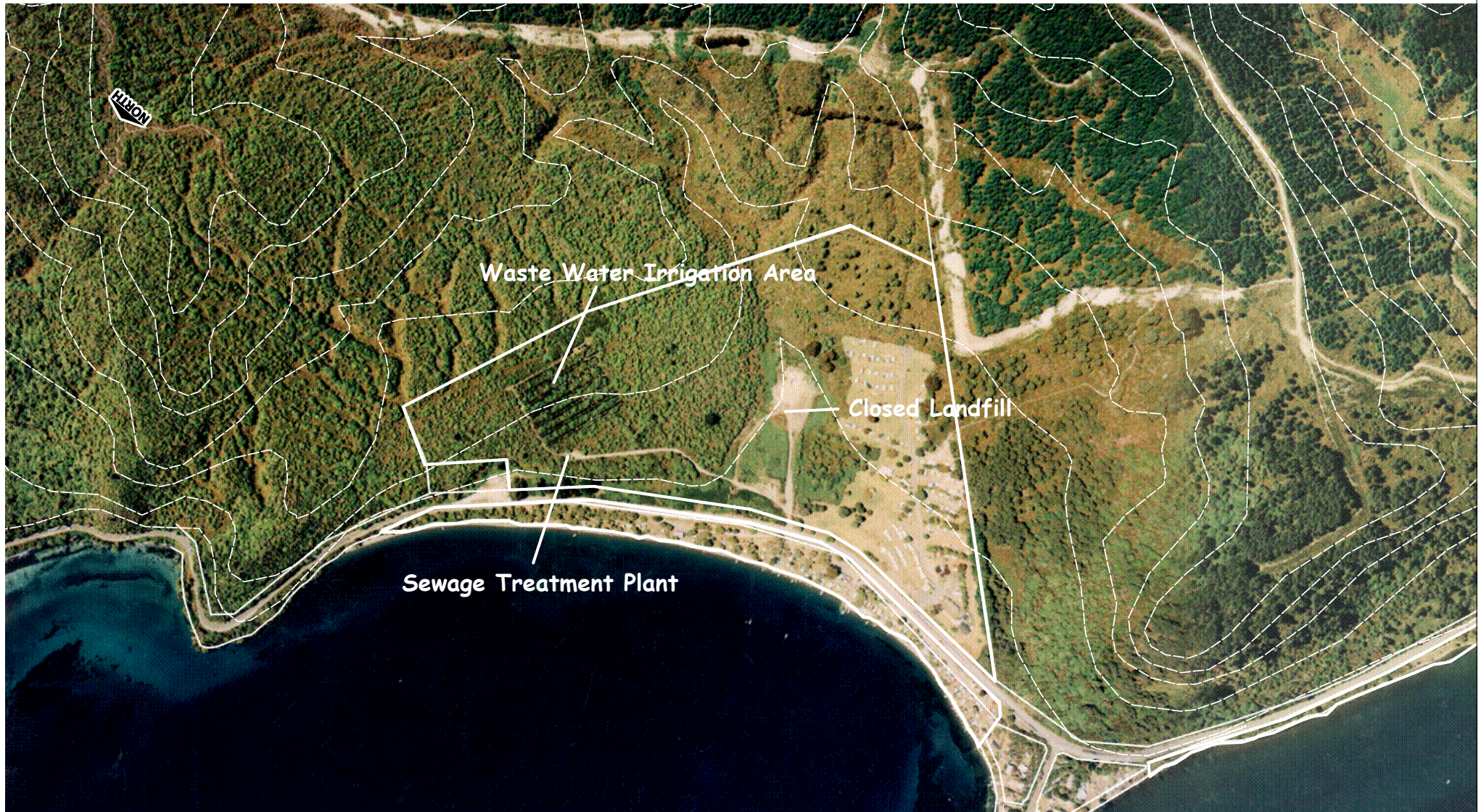
## Motutere Recreation Reserve



**Figure 6 - Sewage Treatment Plant and Closed Landfill Sites**

Scale 1:7500

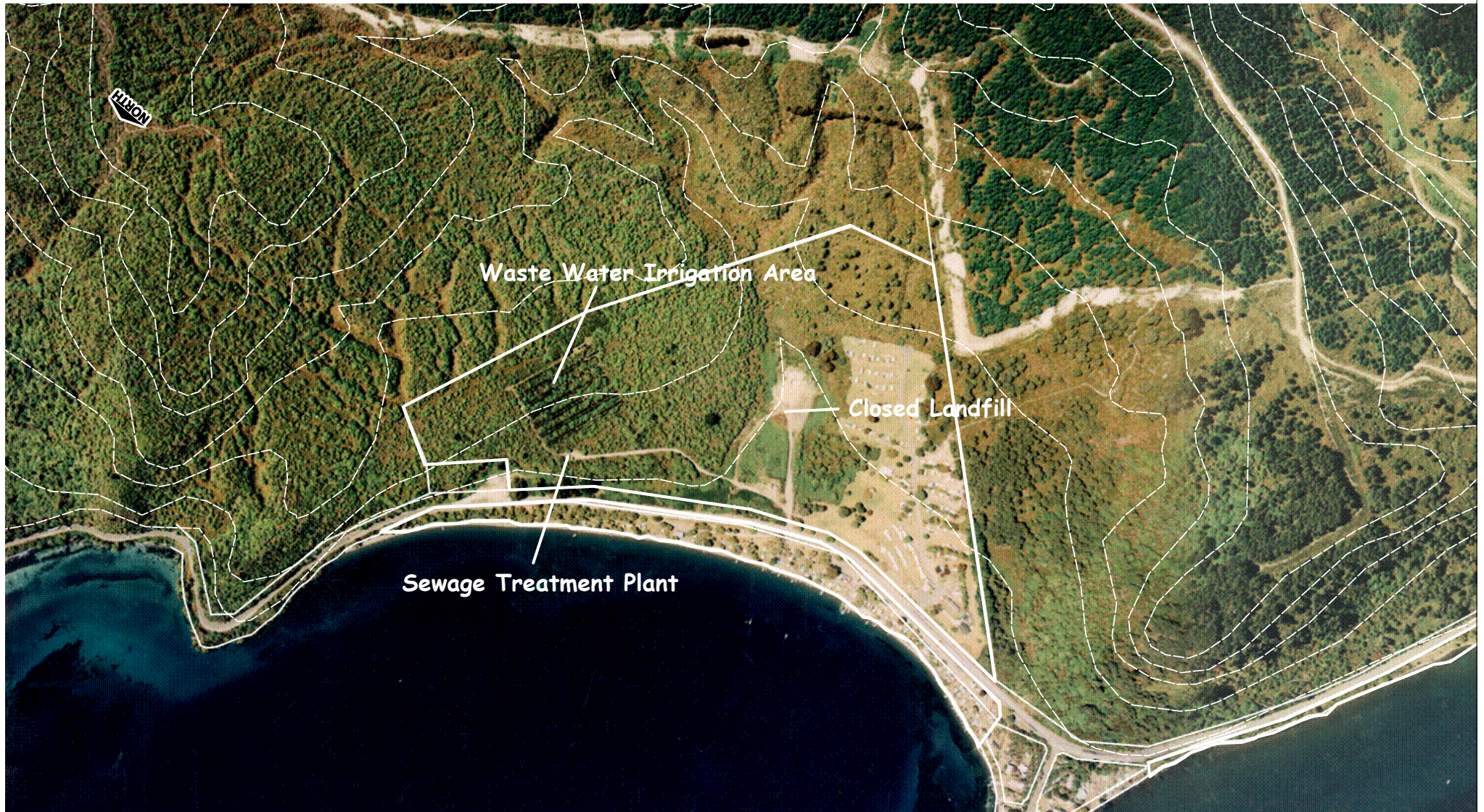
# Motutere Recreation Reserve



**Figure 6 - Sewage Treatment Plant and Closed Landfill Sites**

Scale 1:7500

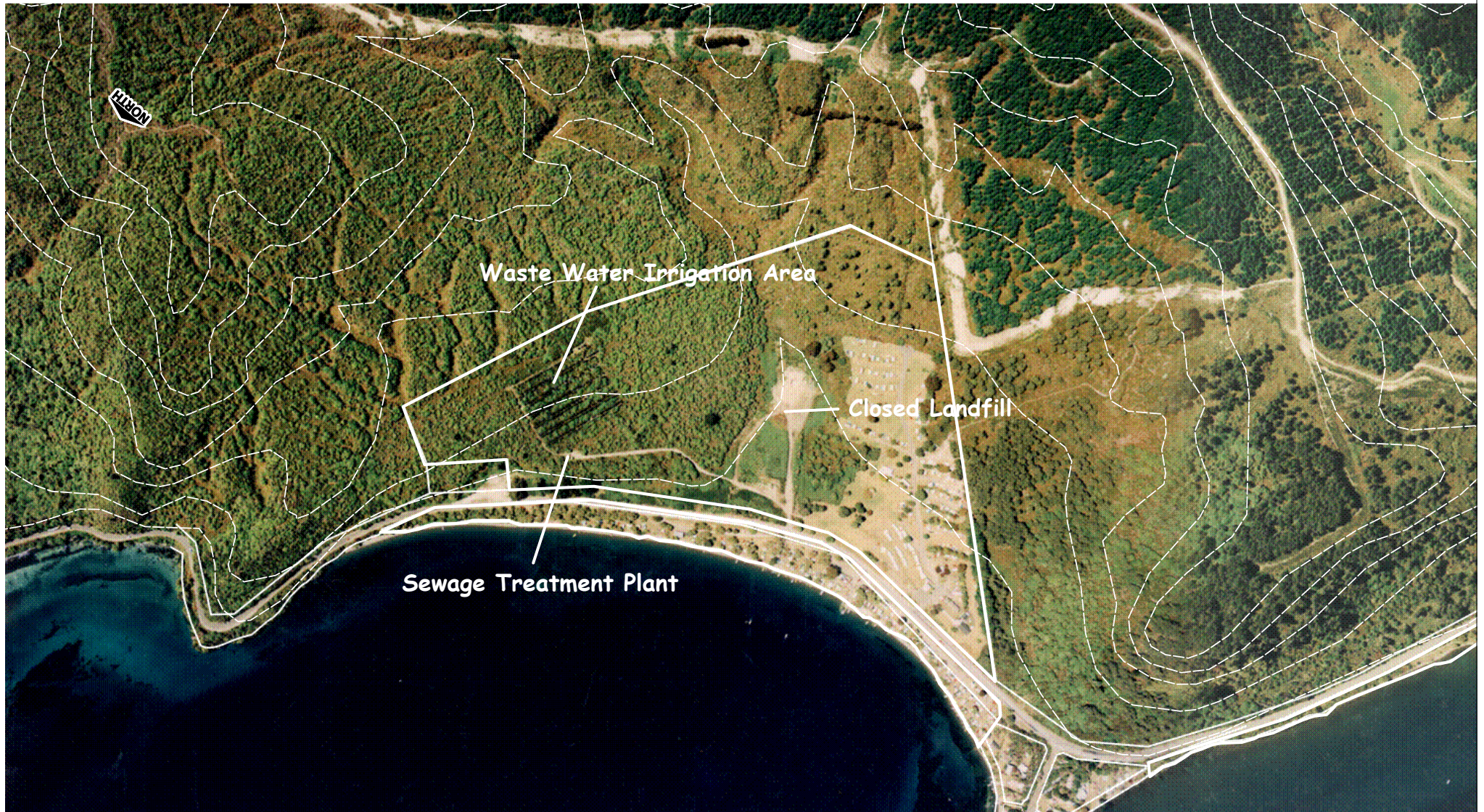
## Motutere Recreation Reserve



**Figure 6 - Sewage Treatment Plant and Closed Landfill Sites**

Scale 1:7500

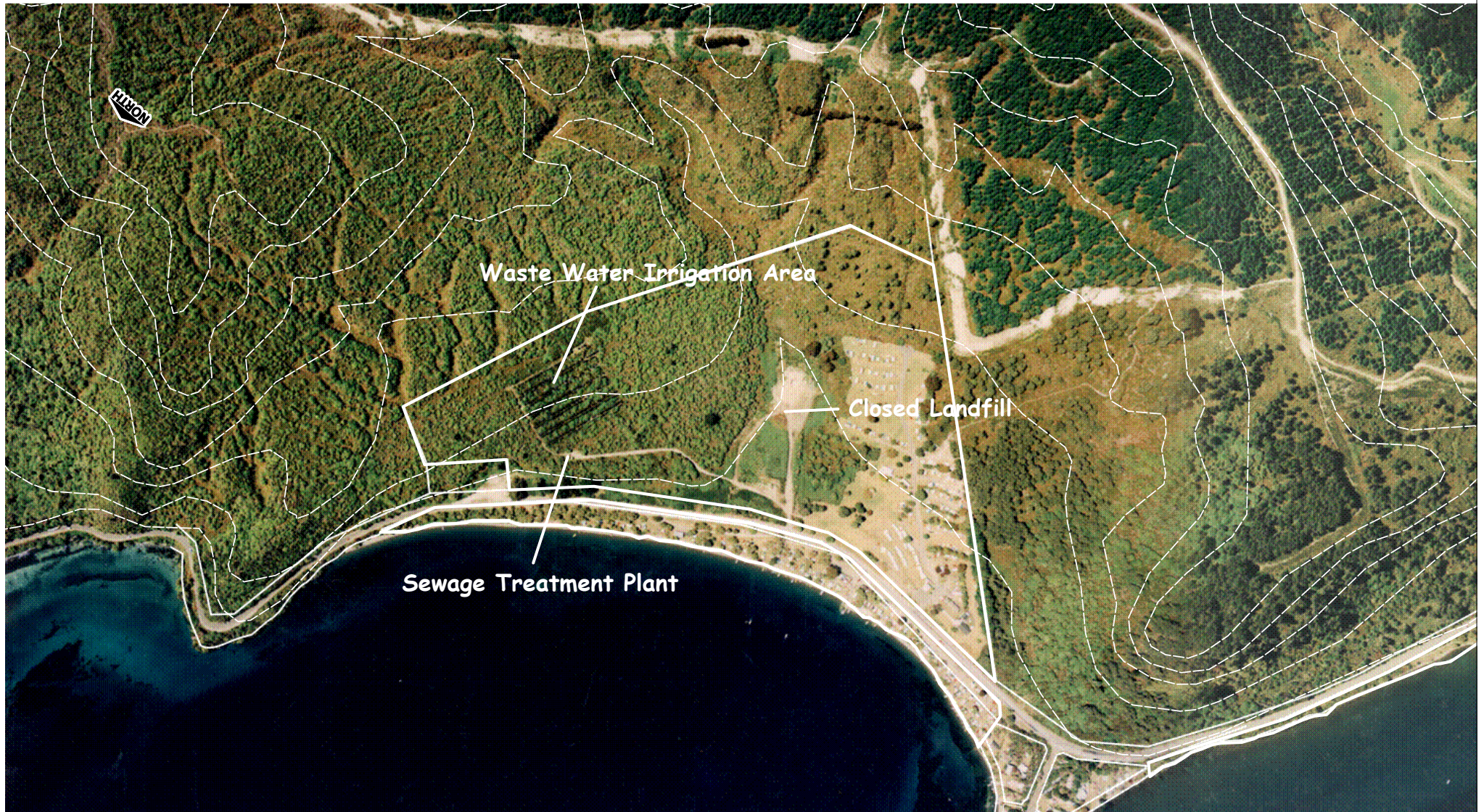
# Motutere Recreation Reserve



**Figure 6 - Sewage Treatment Plant and Closed Landfill Sites**

Scale 1:7500

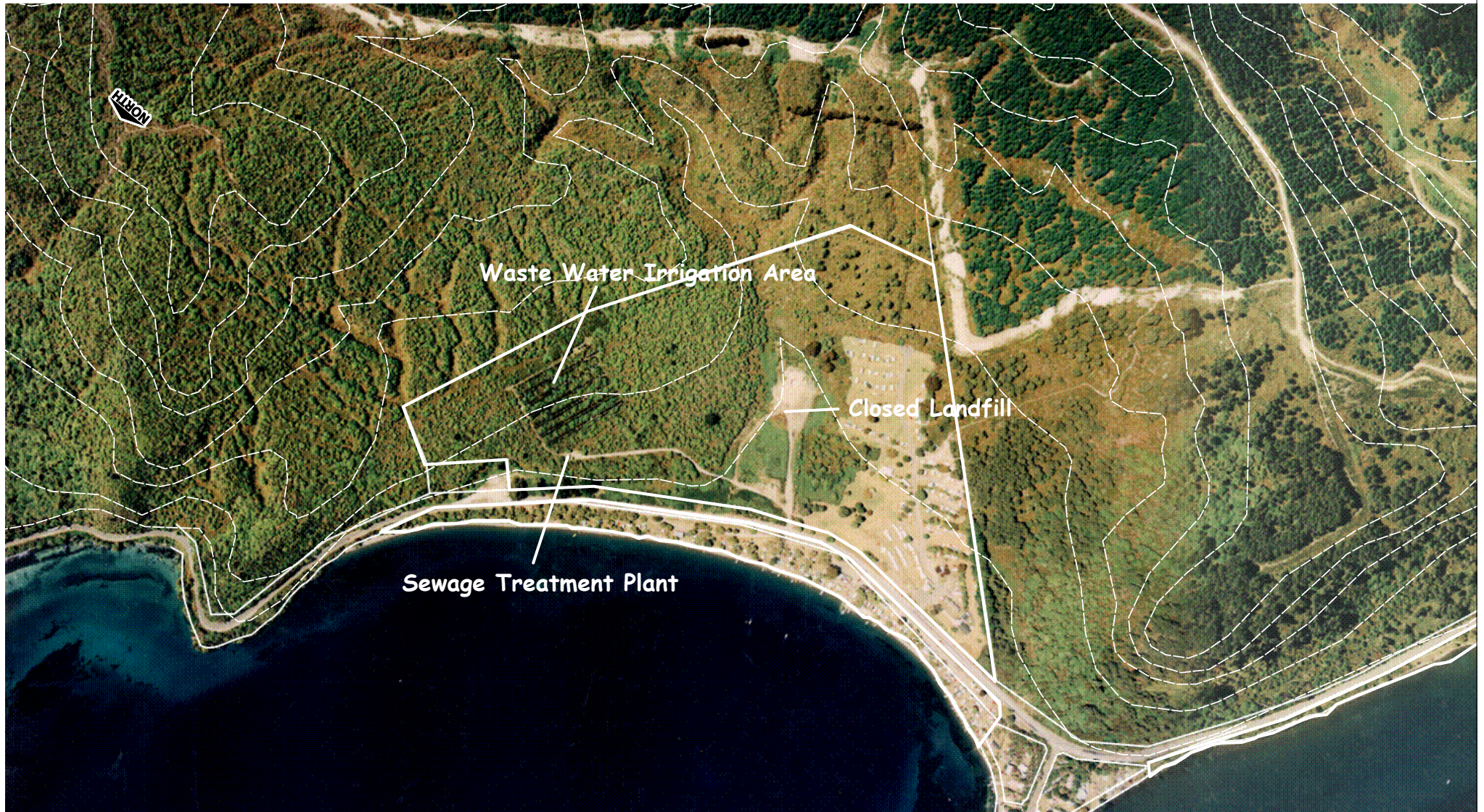
# Motutere Recreation Reserve



**Figure 6 - Sewage Treatment Plant and Closed Landfill Sites**

Scale 1:7500

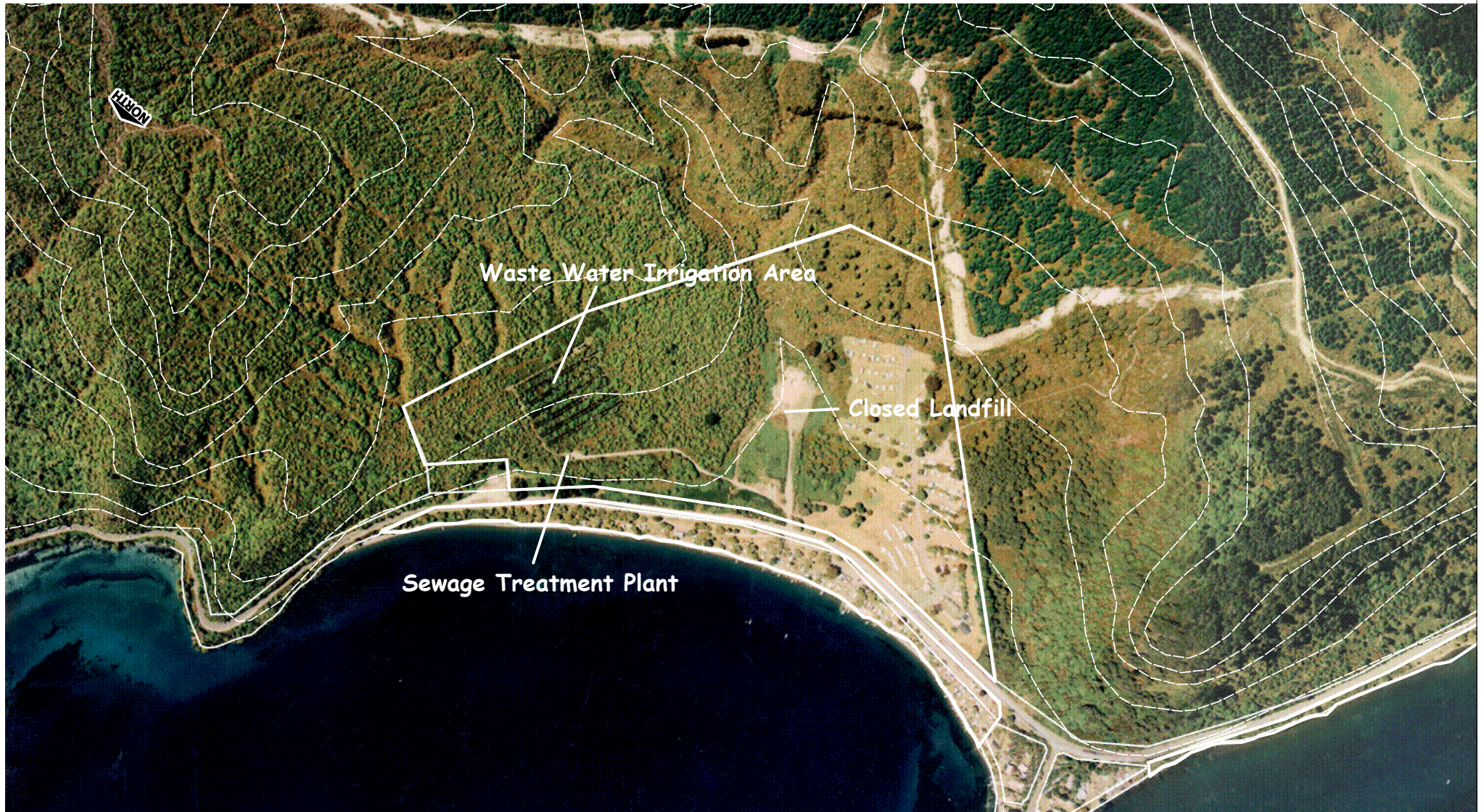
## Motutere Recreation Reserve



**Figure 6 - Sewage Treatment Plant and Closed Landfill Sites**

Scale 1:7500

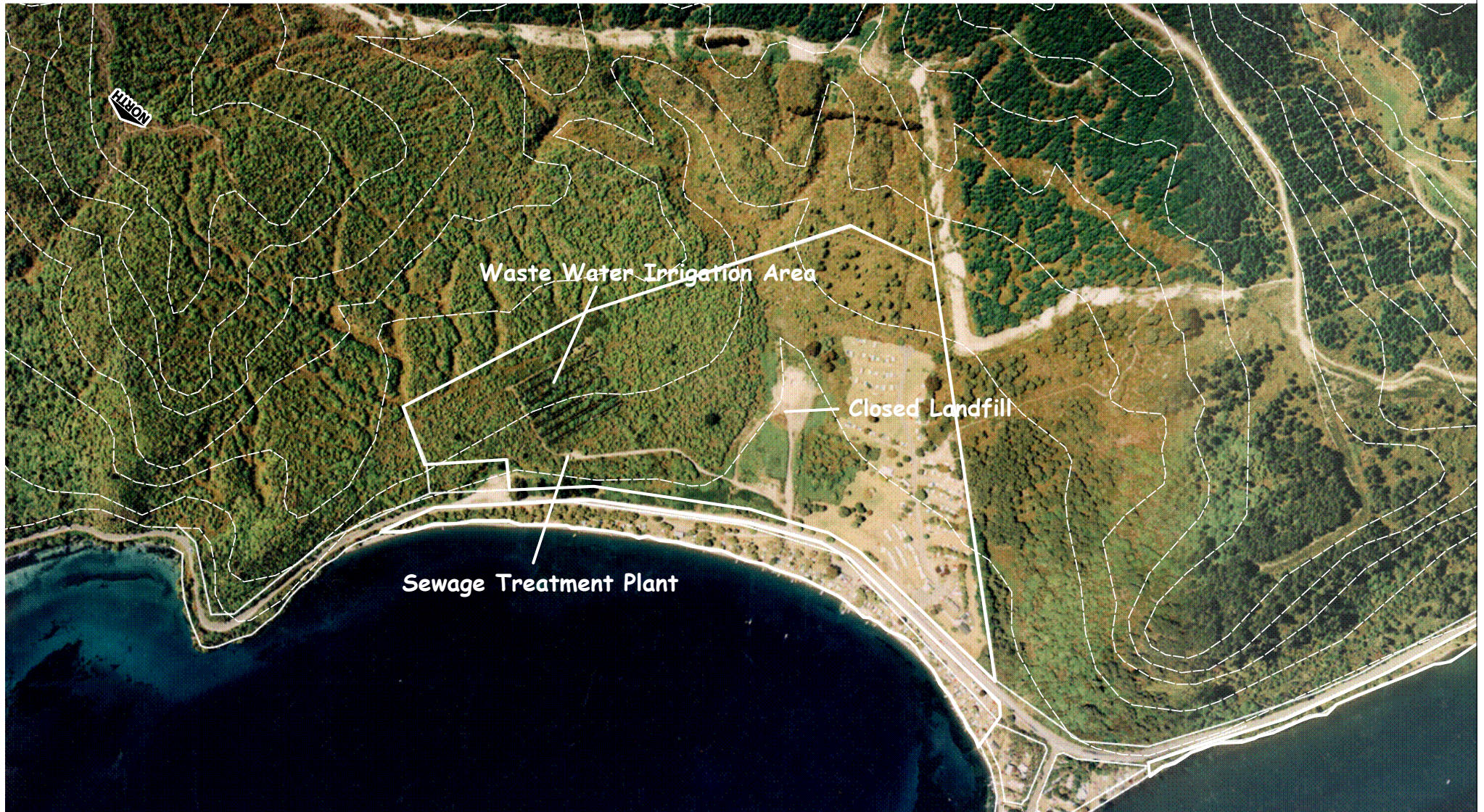
## Motutere Recreation Reserve



**Figure 6 - Sewage Treatment Plant and Closed Landfill Sites**

Scale 1:7500

# Motutere Recreation Reserve

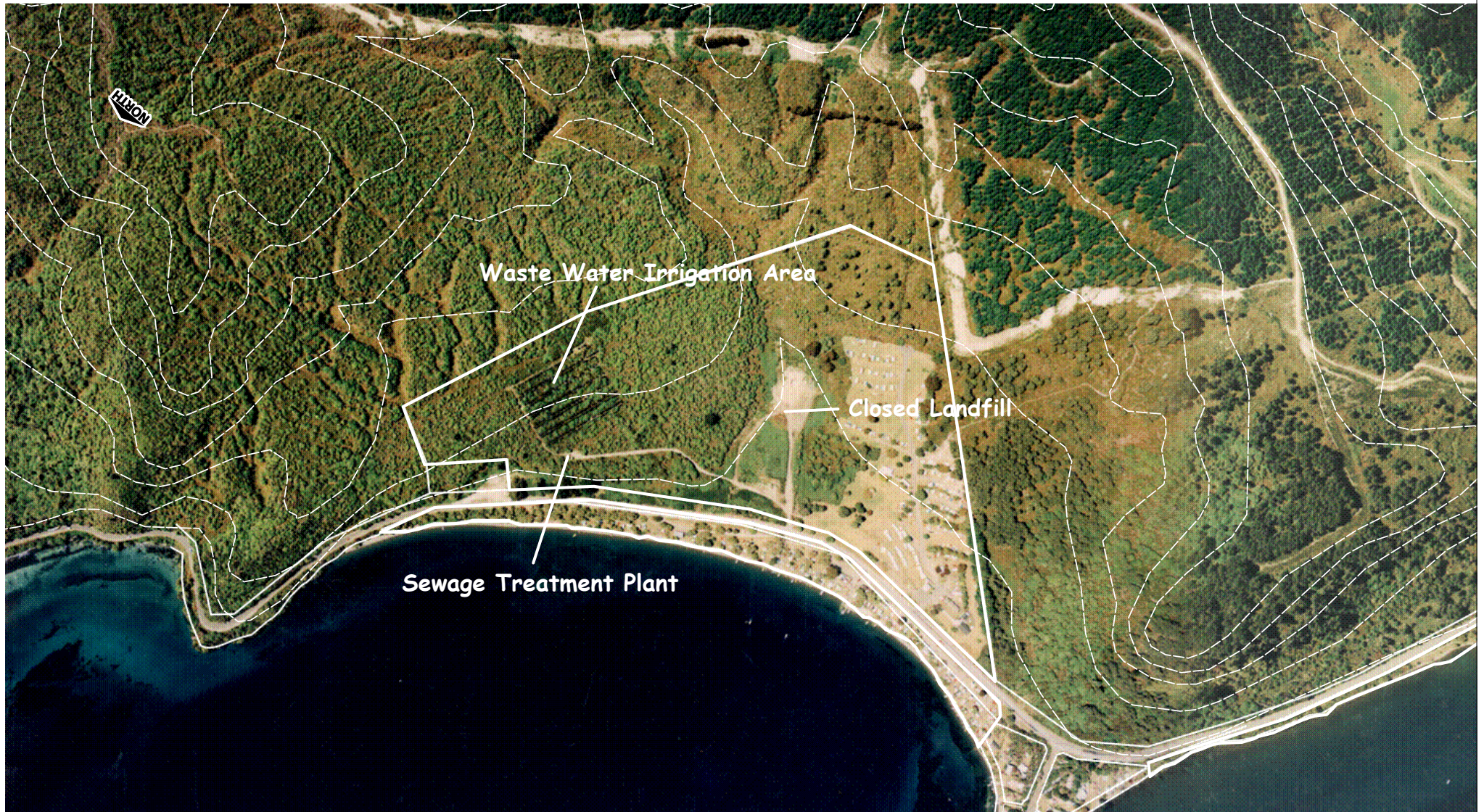


**Figure 6 - Sewage Treatment Plant and Closed Landfill Sites**

Scale 1:7500



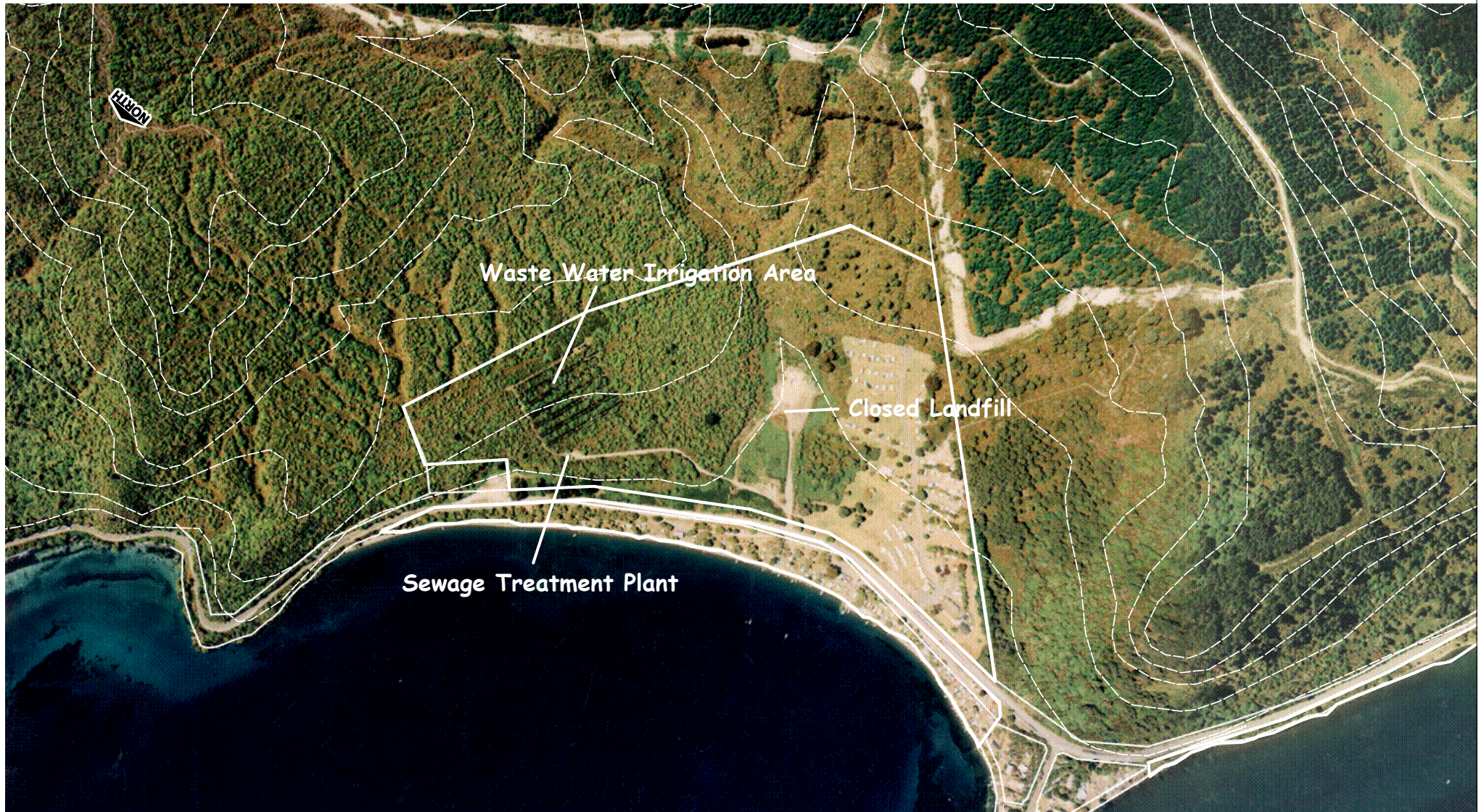
# Motutere Recreation Reserve



**Figure 6 - Sewage Treatment Plant and Closed Landfill Sites**

Scale 1:7500

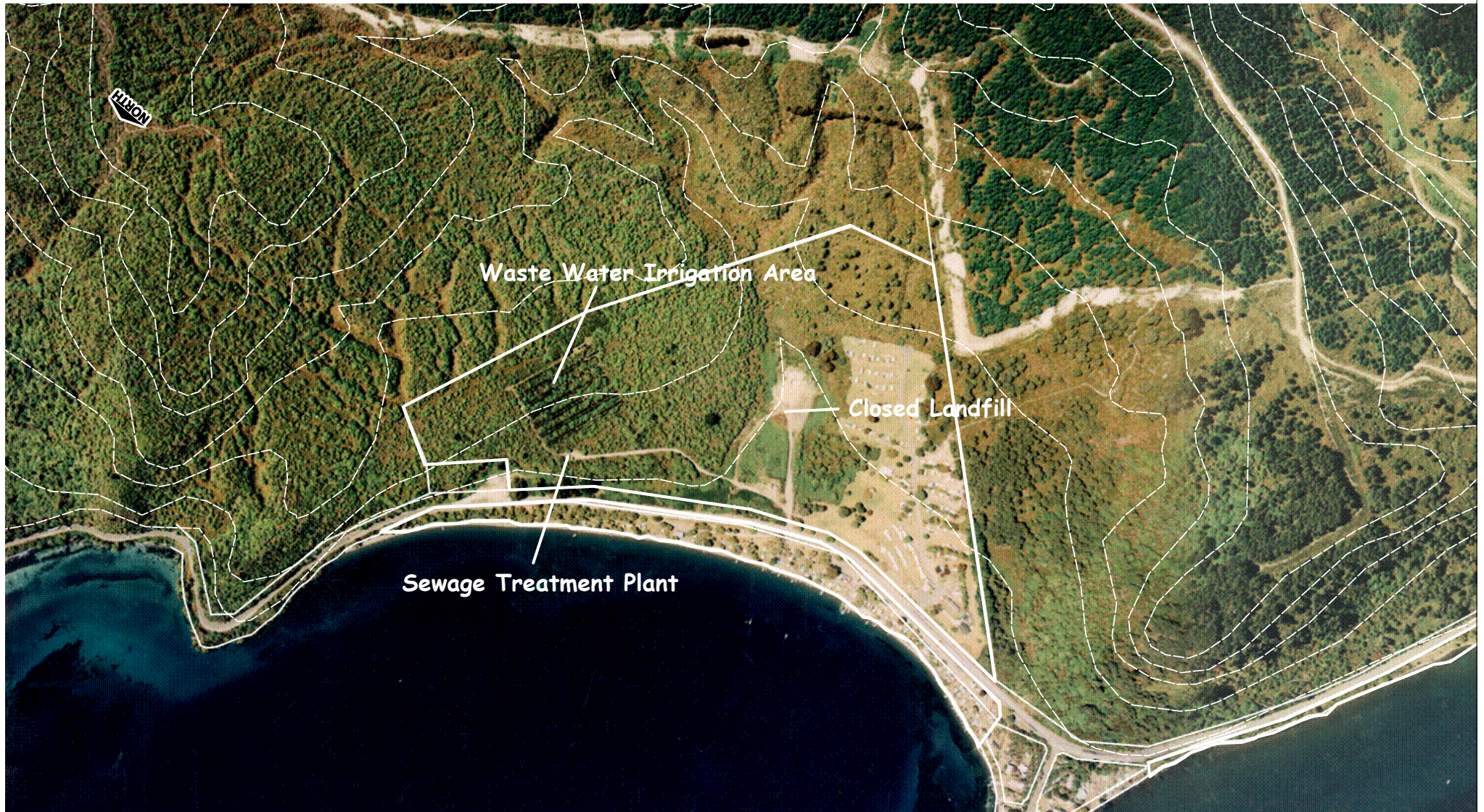
# Motutere Recreation Reserve



**Figure 6 - Sewage Treatment Plant and Closed Landfill Sites**

Scale 1:7500

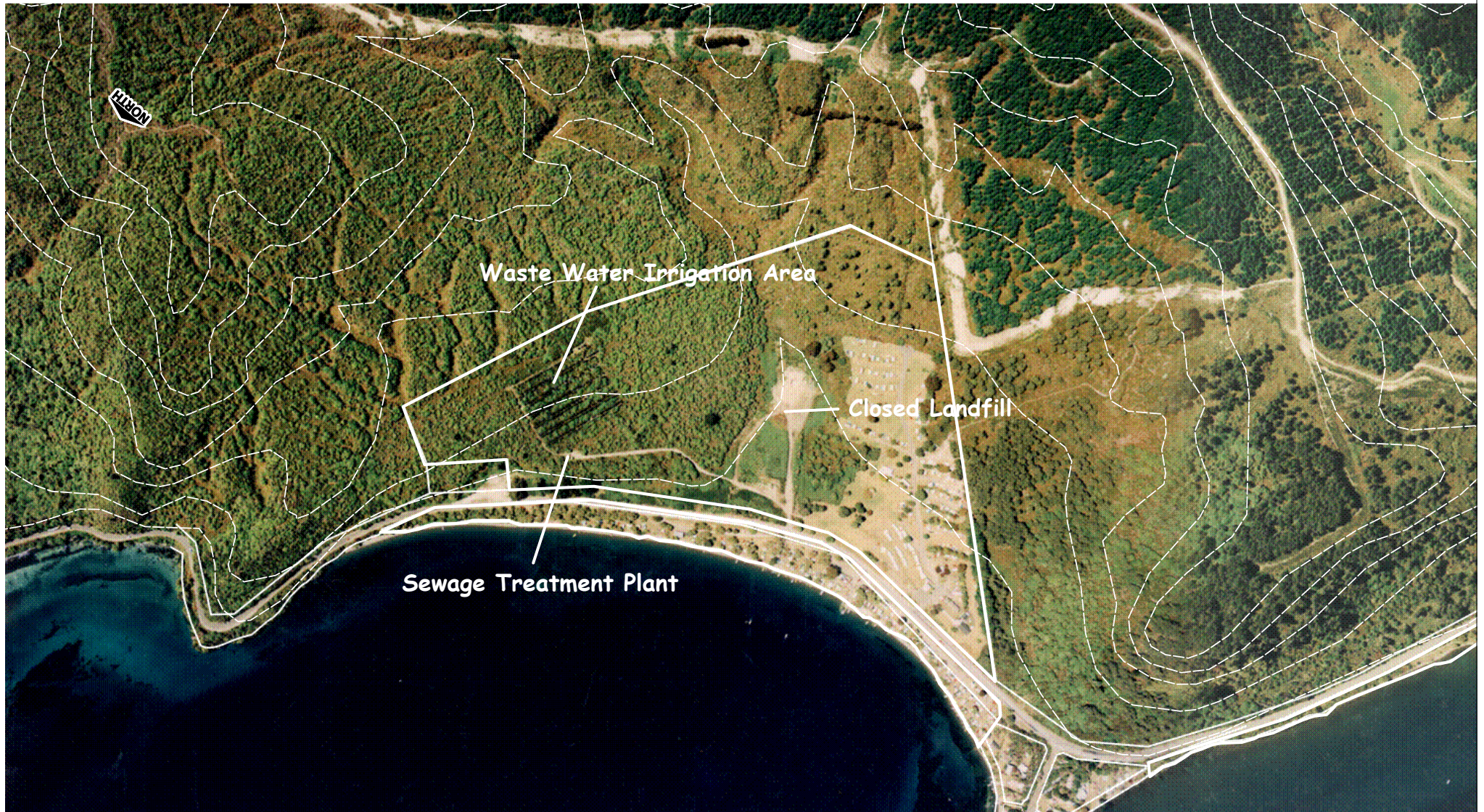
## Motutere Recreation Reserve



**Figure 6 - Sewage Treatment Plant and Closed Landfill Sites**

Scale 1:7500

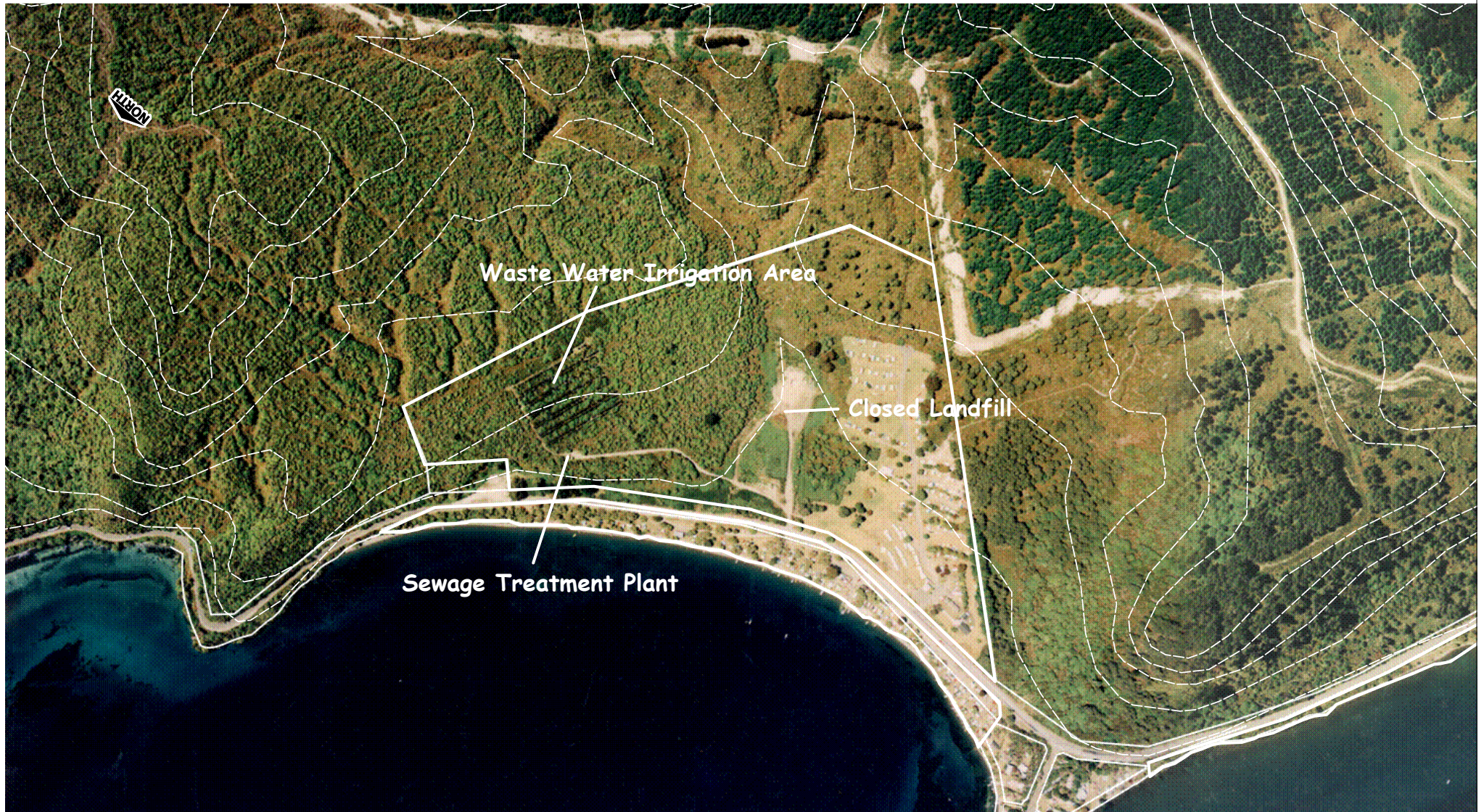
# Motutere Recreation Reserve



**Figure 6 - Sewage Treatment Plant and Closed Landfill Sites**

Scale 1:7500

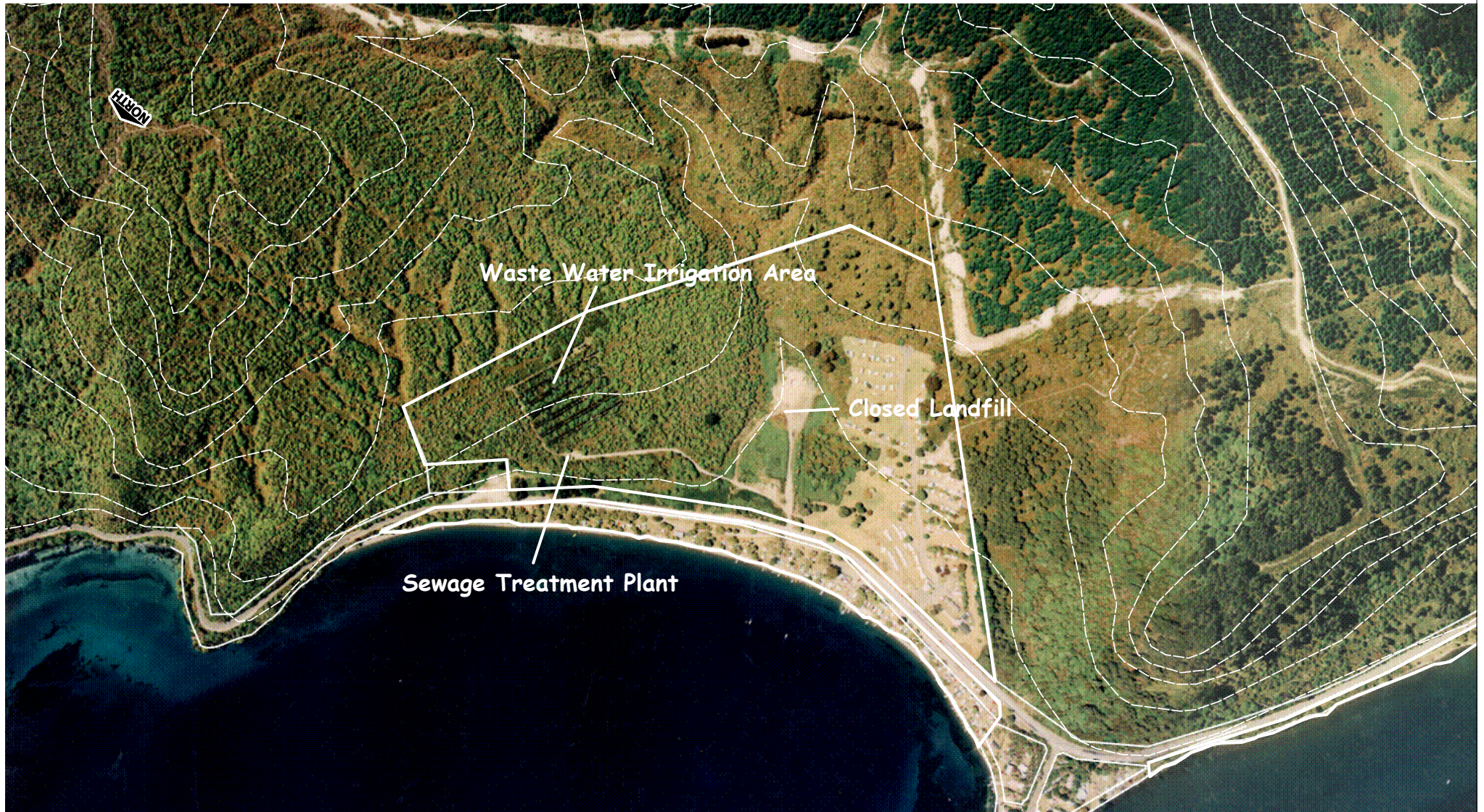
## Motutere Recreation Reserve



**Figure 6 - Sewage Treatment Plant and Closed Landfill Sites**

Scale 1:7500

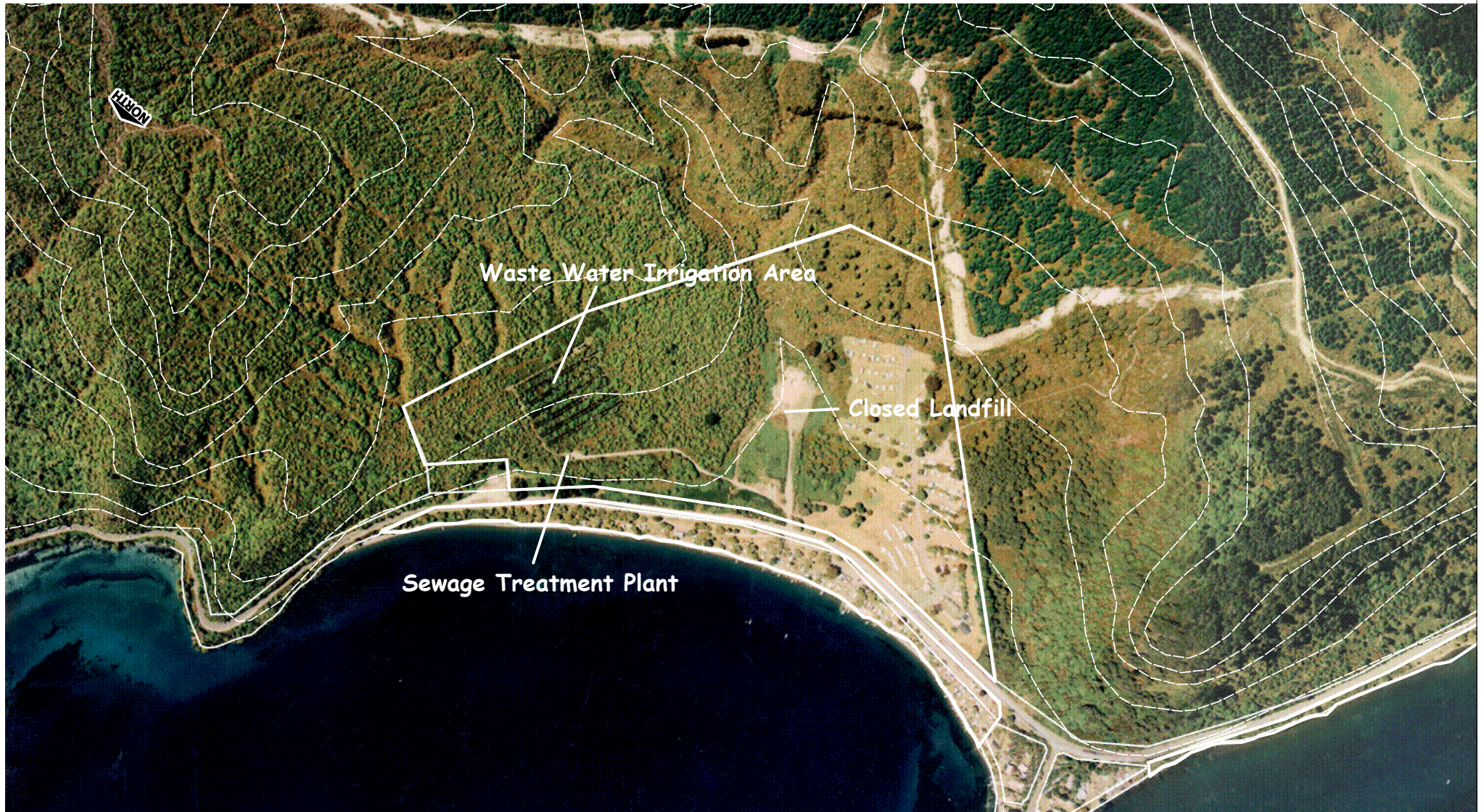
# Motutere Recreation Reserve



**Figure 6 - Sewage Treatment Plant and Closed Landfill Sites**

Scale 1:7500

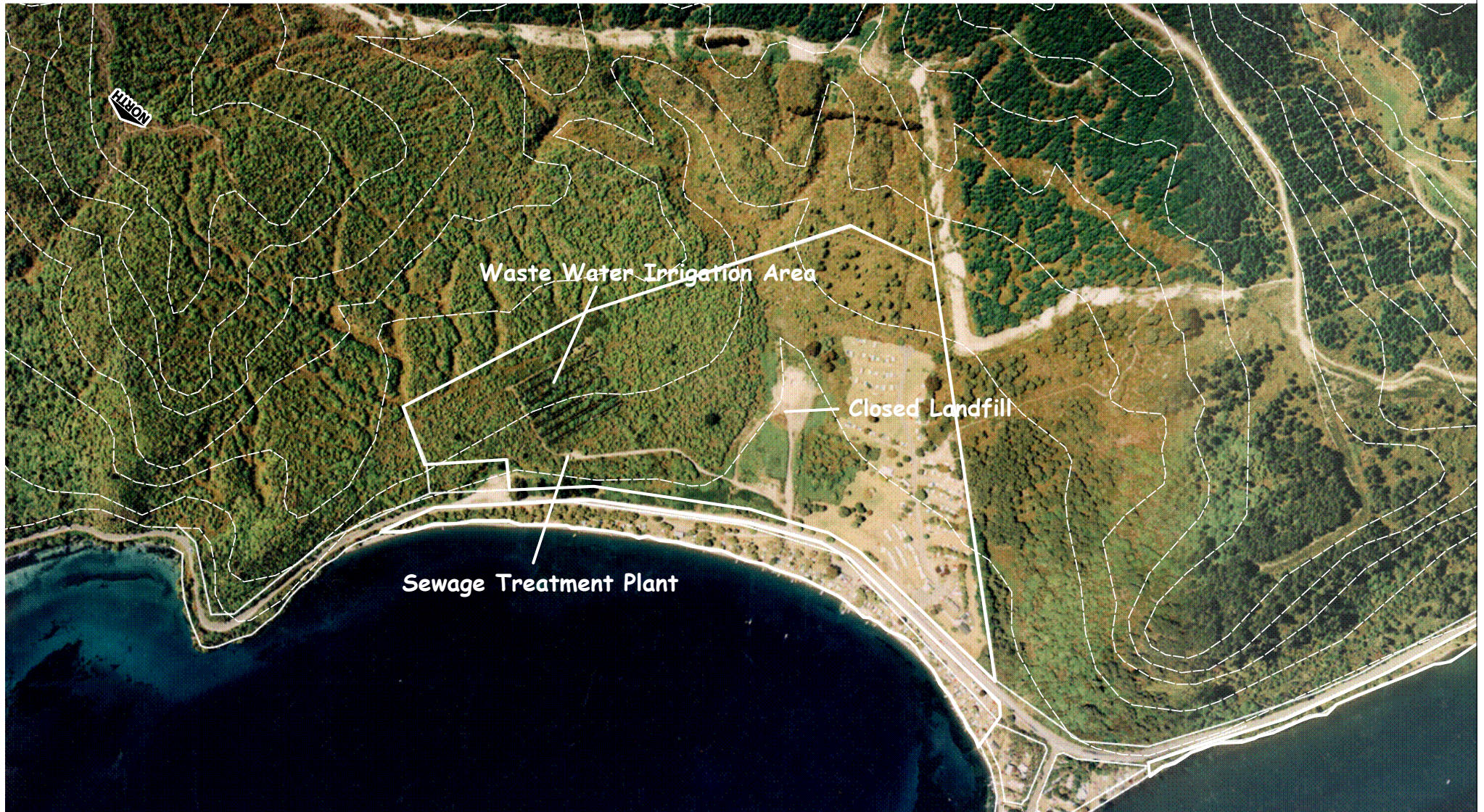
## Motutere Recreation Reserve



**Figure 6 - Sewage Treatment Plant and Closed Landfill Sites**

Scale 1:7500

## Motutere Recreation Reserve

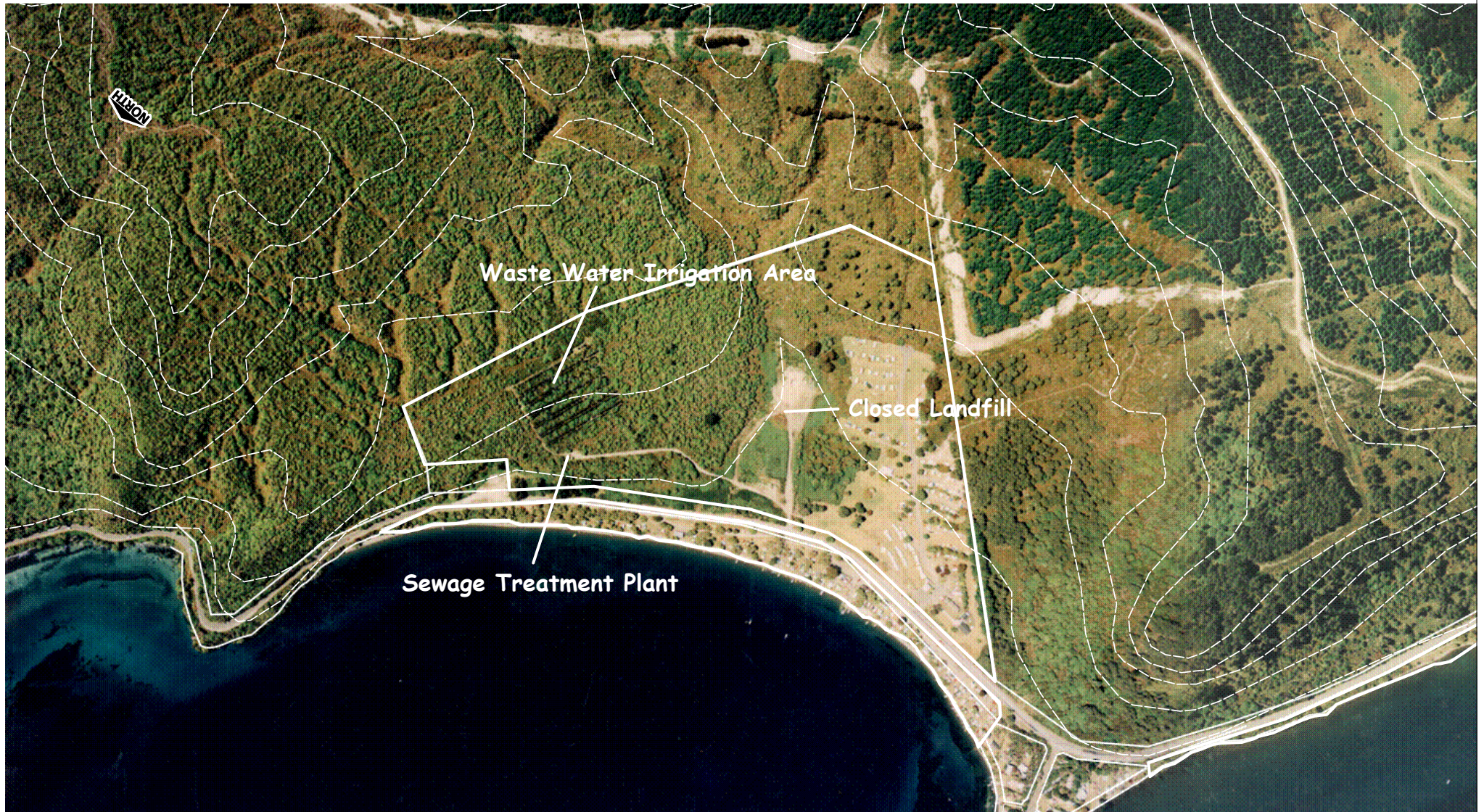


**Figure 6 - Sewage Treatment Plant and Closed Landfill Sites**

Scale 1:7500



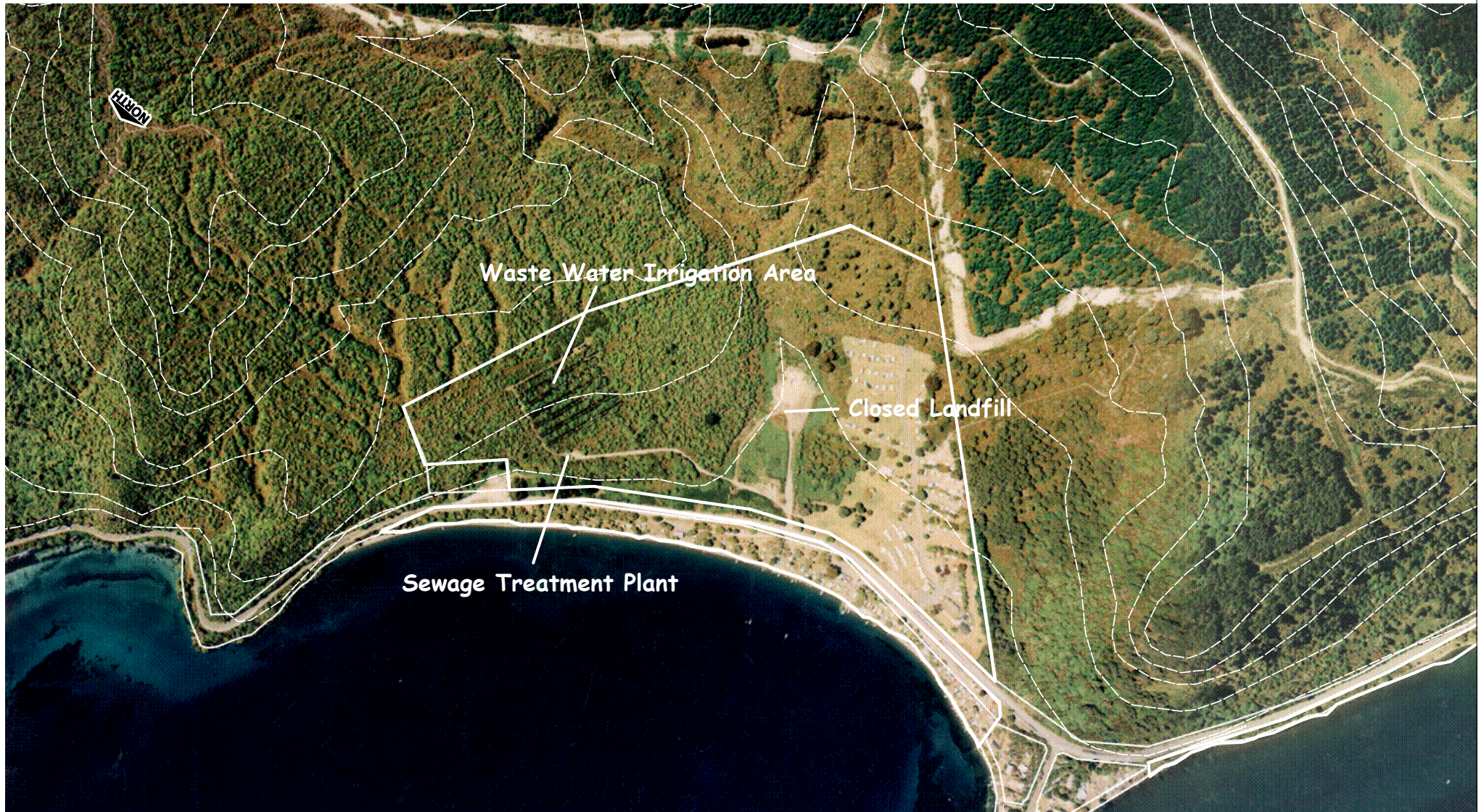
## Motutere Recreation Reserve



**Figure 6 - Sewage Treatment Plant and Closed Landfill Sites**

Scale 1:7500

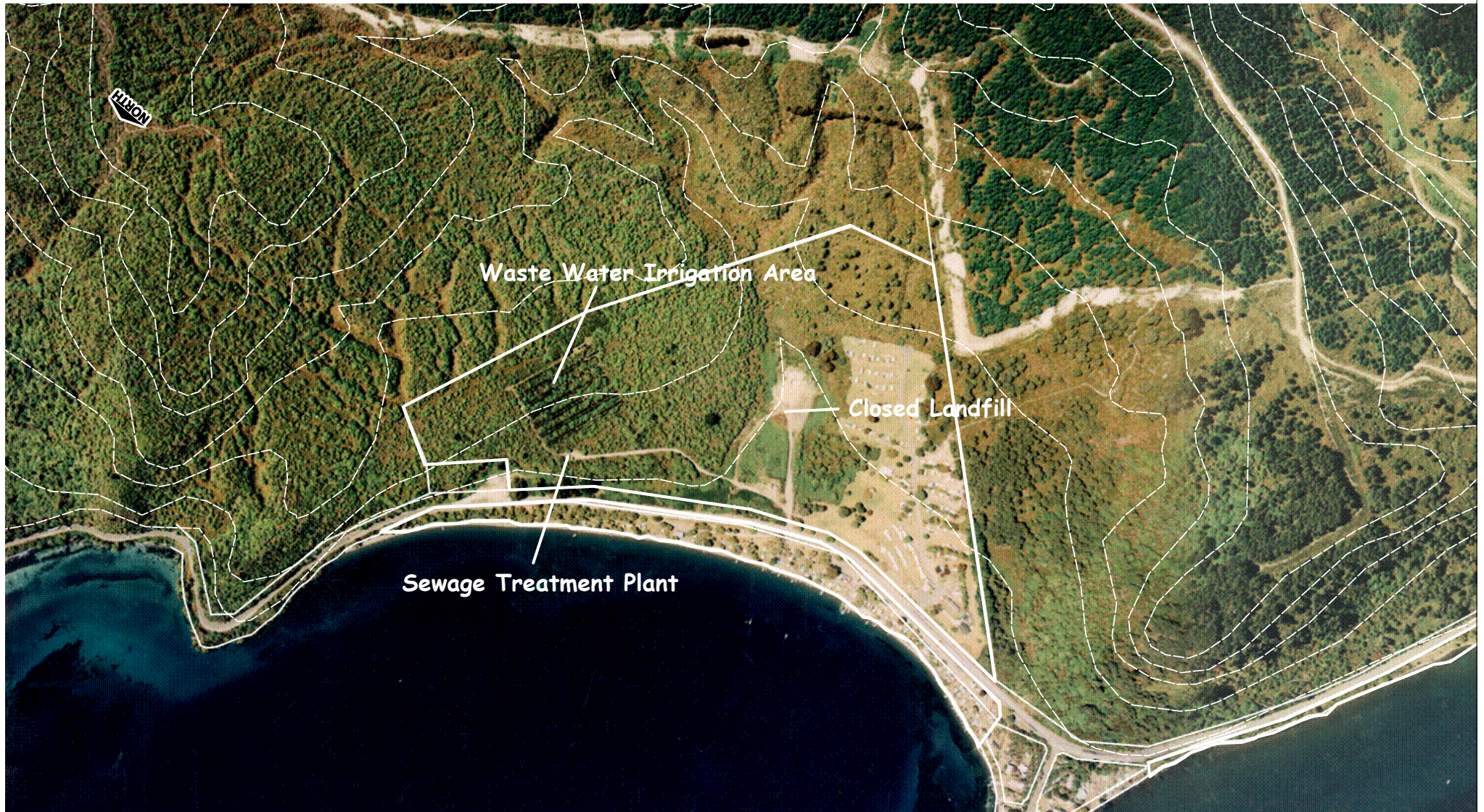
## Motutere Recreation Reserve



**Figure 6 - Sewage Treatment Plant and Closed Landfill Sites**

Scale 1:7500

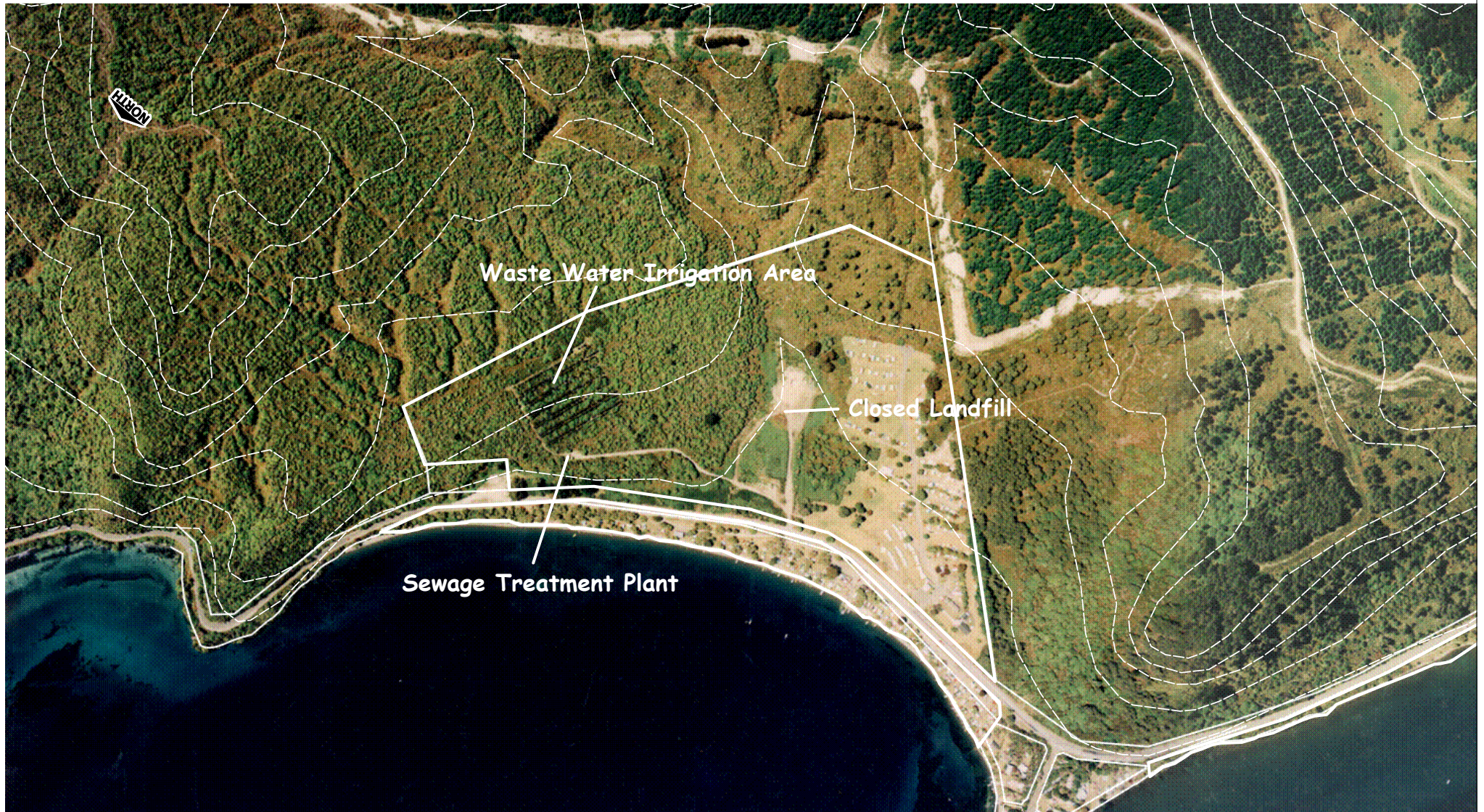
# Motutere Recreation Reserve



**Figure 6 - Sewage Treatment Plant and Closed Landfill Sites**

Scale 1:7500

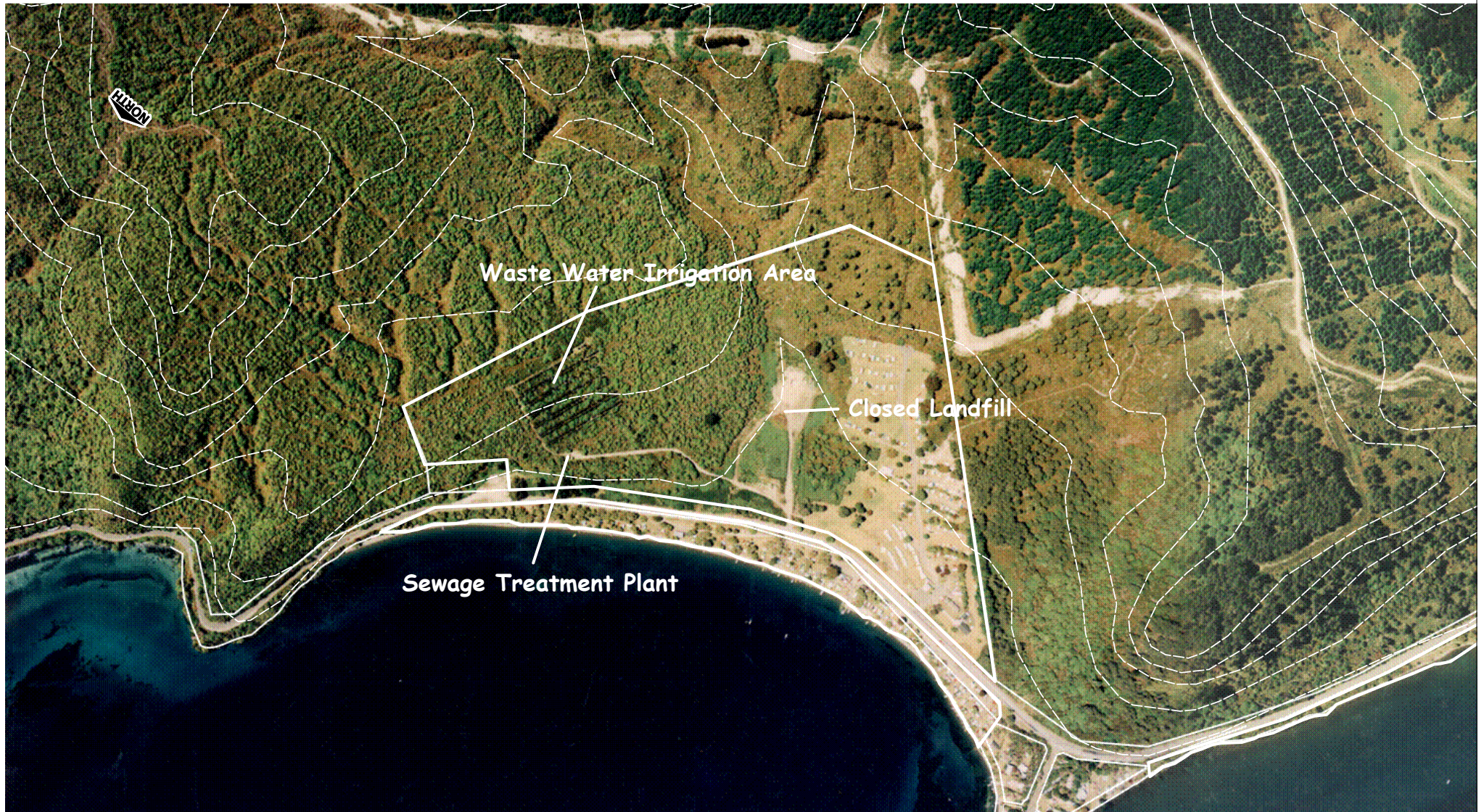
## Motutere Recreation Reserve



**Figure 6 - Sewage Treatment Plant and Closed Landfill Sites**

Scale 1:7500

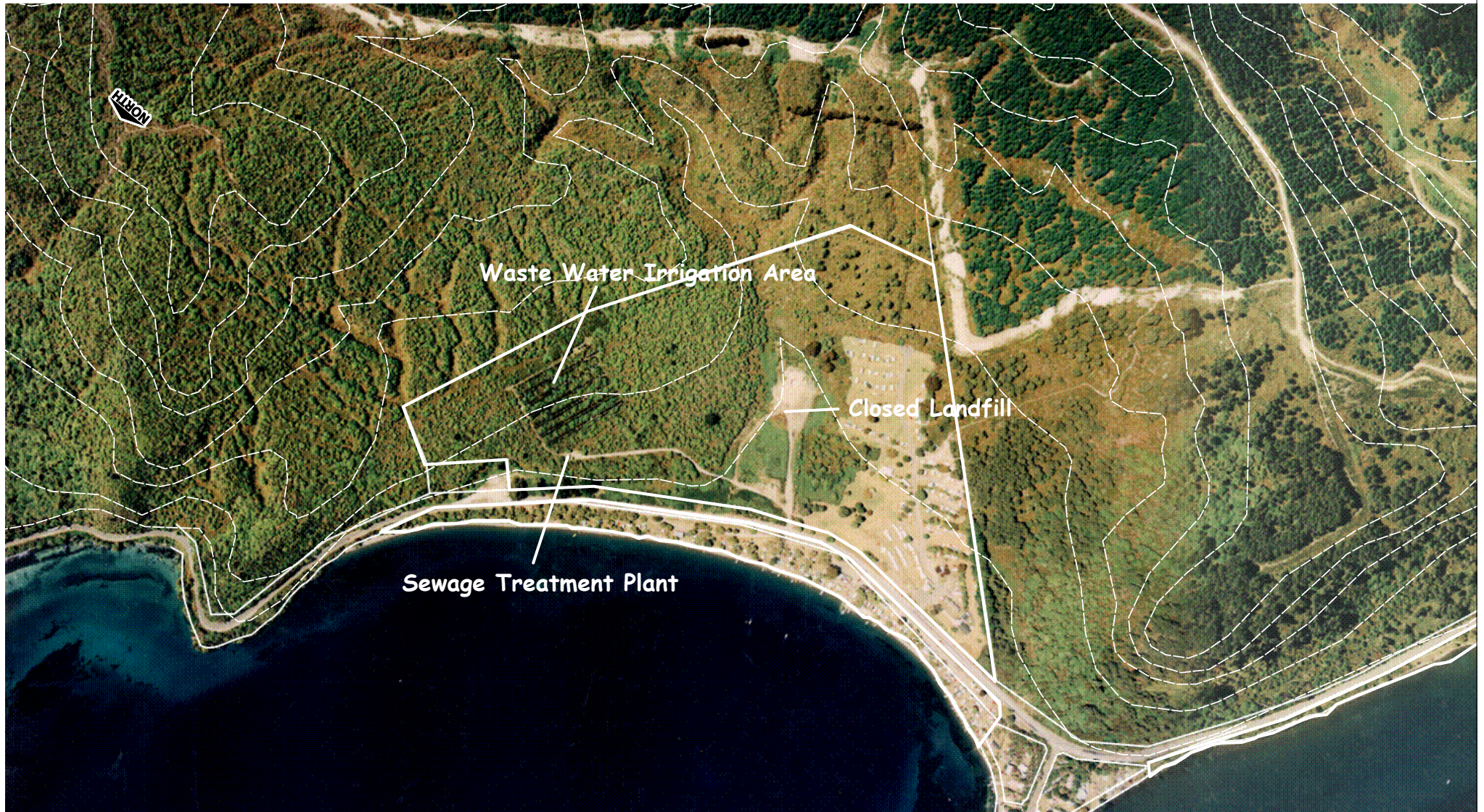
## Motutere Recreation Reserve



**Figure 6 - Sewage Treatment Plant and Closed Landfill Sites**

Scale 1:7500

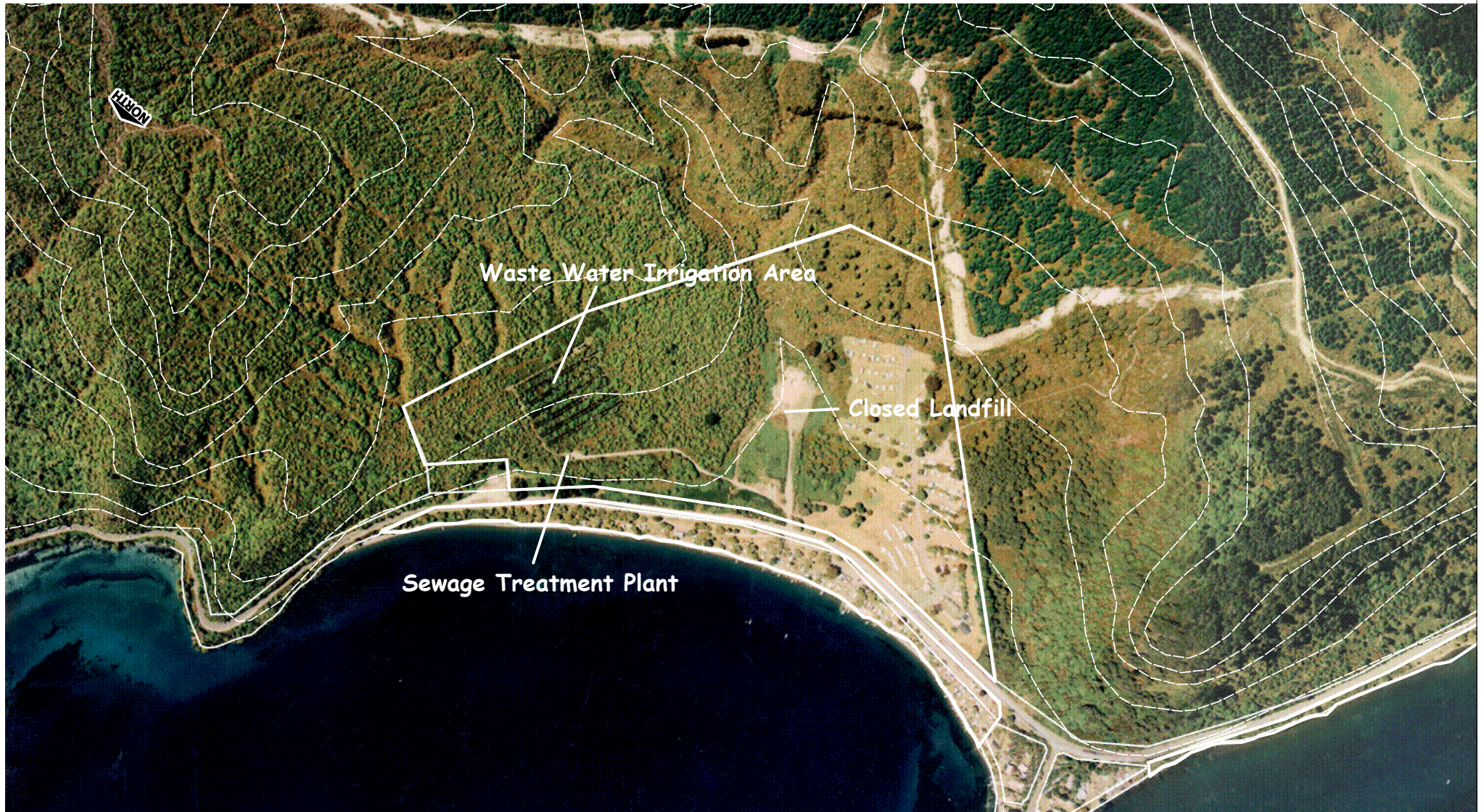
# Motutere Recreation Reserve



**Figure 6 - Sewage Treatment Plant and Closed Landfill Sites**

Scale 1:7500

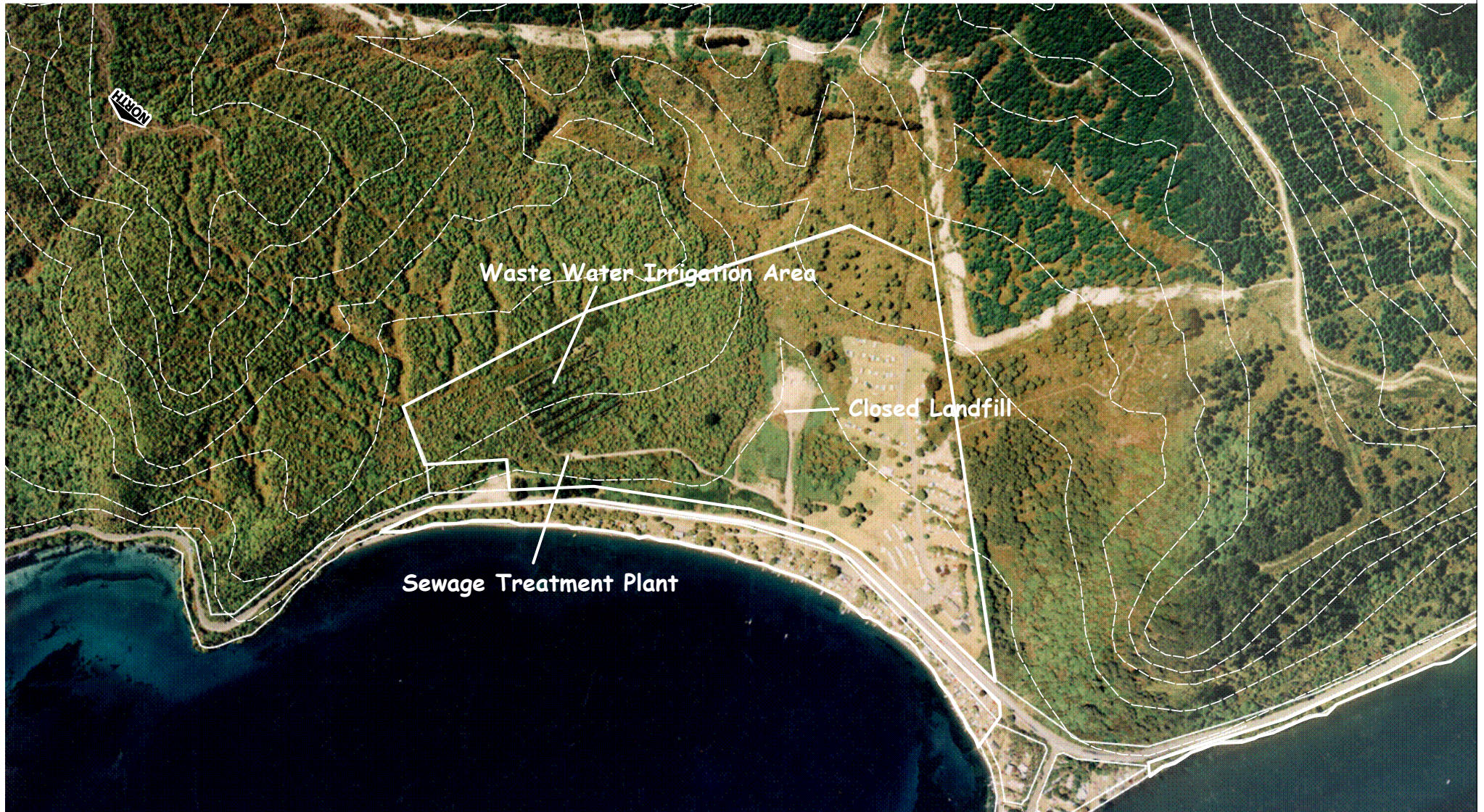
## Motutere Recreation Reserve



**Figure 6 - Sewage Treatment Plant and Closed Landfill Sites**

Scale 1:7500

## Motutere Recreation Reserve

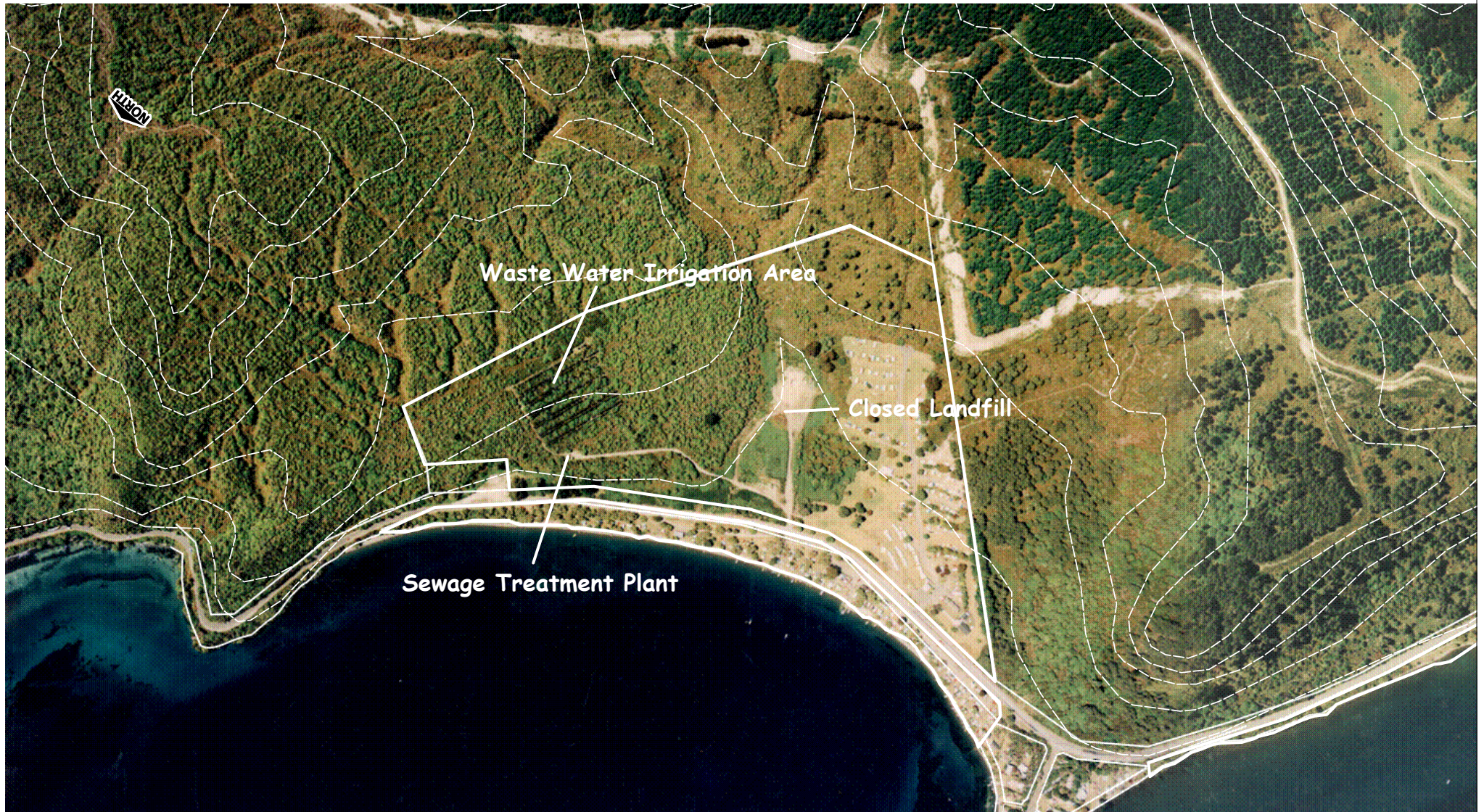


**Figure 6 - Sewage Treatment Plant and Closed Landfill Sites**

Scale 1:7500



## Motutere Recreation Reserve



**Figure 6 - Sewage Treatment Plant and Closed Landfill Sites**

Scale 1:7500